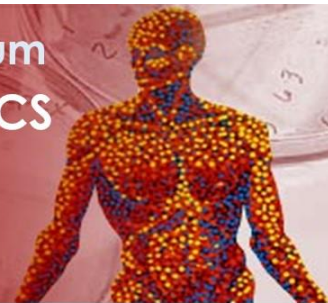




2024 Wisconsin Human Proteomics Symposium NEW FRONTIERS IN CLINICAL PROTEOMICS

July 31 – August 1, 2024

UW-Madison, Health Science Learning Center (HSLC)
750 Highland Ave, Madison WI 53705



DAY 1 | July 31

8:00am – 5:00pm	Conference Registration	HSLC Atrium
<p><u>Women’s Initiative and DEI Session</u> (Sponsored by UW Carbone Cancer Center) Chairs: Lauren Fields and Anna Grace 9:00 am – 12:30 pm (HSLC 1306, Virtual option available in Zoom)</p>		
<p>9:00 am – 9:05 am</p> <p>9:05 am – 9:30 am (20 min presentation, 5 min Q&A)</p> <p>9:30 am – 9:55 am (20 min presentation, 5 min Q&A)</p> <p>9:55 am – 10:20 am (20 min presentation, 5 min Q&A)</p> <p>10:20 am – 10:45 am (20 min presentation, 5 min Q&A)</p>	<p>Welcome Ying Ge, PhD University of Wisconsin – Madison</p> <p>Judith Simcox, PhD University of Wisconsin-Madison “TBD”</p> <p>Amber Mosley, PhD Indiana University <i>“The Stress of Cellular Origami: Defining the Unfolded Protein Response with Thermal Proteome Profiling”</i></p> <p>Michelle Kimple, PhD University of Wisconsin-Madison <i>“Elucidating the Role of Circulating Lipids and Their Metabolites in Diabetes Pathophysiology Using Targeted and Untargeted Mass Spectrometry Approaches”</i></p> <p>Stefani Thomas, PhD University of Minnesota <i>“Overcoming Barriers to Develop Diagnostic Serum Protein Biomarkers for High-Grade Serous Ovarian Cancer”</i></p>	
11:00 am – 12:30 pm	Panel Discussion and Lunch	

Special Session on Spatial Proteomics via Imaging Mass Spectrometry

Chair: Lingjun Li, PhD

1:00 pm – 2:25 pm (HSLC 1306, Virtual option available in Zoom)

1:00 pm – 1:45 pm (40 min presentation, 5 min Q&A)	<p><u>Keynote Speaker</u> Ron Heeren, PhD Maastricht University <i>“Omics’ and imaging in single cell spatial biology”</i></p> <p>Peggi Angel, PhD Medical University of South Carolina <i>“Extracellular Glycoproteins as Pathological Differentiators in Tissue and Fluids”</i></p> <p>Peter Verhaert, PhD ProteoFormiX <i>“HRMS Secretomics Approach to Map True Biological Activity of Human Cells in Culture”</i></p>	
1:45 pm– 2:10 pm (20 min presentation, 5 min Q&A)		
2:10 pm– 2:25 pm (12 min presentation, 3 min Q&A)		
2:25 pm– 2:45 pm	Break & Exhibits	HSLC Atrium

Rising Star Session, Senior (Assistant Professors)

(Sponsored by UW Carbone Cancer Center)

Chair: Daniel Matson, MD, PhD

2:45 pm – 3:50 pm (HSLC 1306, Virtual option available in Zoom)

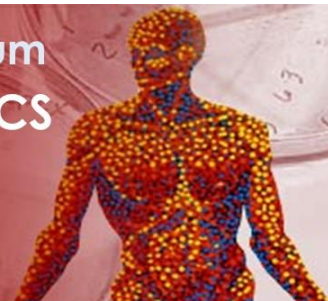
2:45 pm – 3:00 pm (12 min presentation, 3 min Q&A)	<p>Irene Ong, PhD University of Wisconsin-Madison TBD</p> <p>Jia Fan, PhD Tulane University <i>“Advances in Mass Spectrometry for Precision Diagnostics and Pathogen Identification”</i></p> <p>Qing Yu, PhD UMass Chan Medical School <i>“High-throughput intelligent chemoproteomics for massive protein-ligand insight and targeted drug discovery”</i></p> <p>Tao Chen, PhD Absea Biotechnology Ltd. <i>“Platforms and Resources for Proteomics and Beyond”</i></p>	
3:00 pm– 3:15 pm (12 min presentation, 3 min Q&A)		
3:15 pm – 3:30 pm (12 min presentation, 3 min Q&A)		
3:30 pm– 3:45 pm (12 min presentation, 3 min Q&A)		
4:00 pm – 6:00pm	Reception, Poster Competition & Exhibits	HSLC Atrium



2024 Wisconsin Human Proteomics Symposium NEW FRONTIERS IN CLINICAL PROTEOMICS

July 31 – August 1, 2024

UW-Madison, Health Science Learning Center (HSLC)
750 Highland Ave, Madison WI 53705



DAY 2 | August 1

8:00am – 12:00pm	Conference Registration	HSLC Atrium
<p><u>Session I</u> Chair: Ying Ge, PhD 9:00 am – 10:50 am (HSLC 1306, Virtual option available in Zoom)</p>		
9:00 am – 9:10 am	<p>Welcome Allan Brasier, MD University of Wisconsin - Madison</p>	
9:10 am – 10:00 am (45 min presentation, 5 min Q&A)	<p><u>Keynote Speaker</u> Matthias Mann, PhD Max-Planck Institute of Biochemistry <i>“Advances in MS-based clinical proteomics: from large cohorts analysis to deep visual proteomics”</i></p>	
10:00 am–10:25 am (20 min presentation, 5 min Q&A)	<p>Akhilesh Pandey, MD, PhD Mayo Clinic “TBD”</p>	
10:25 am– 10:40 am (12 min presentation, 3 min Q&A)	<p>Michael Greig, PhD Bruker “TBD”</p>	
10:40 am – 11:00 am	Break & Exhibits	HSLC Atrium
<p><u>Session II</u> Chair: Jonathan Sweedler, PhD 11:00 am – 12:05 pm (HSLC 1306, Virtual option available in Zoom)</p>		

<p>11:00 am – 11:25 am (20 min presentation, 5 min Q&A)</p> <p>11:25 am – 11:50 am (20 min presentation, 5 min Q&A)</p> <p>11:50 am – 12:05 pm (12 min presentation, 3 min Q&A)</p>	<p style="text-align: center;">Hanno Steen, PhD Harvard Medical School <i>Advances in Body Fluid Proteomics: More from Less and that Much Faster (and Cheaper)</i></p> <p style="text-align: center;">Lee Eckhardt, MD University of Wisconsin – Madison <i>“Proteomics in Inherited Arrhythmic Conditions; a clinical perspective”</i></p> <p style="text-align: center;">Mike Rosenblatt, PhD Promega <i>“Toward Optimal Workflow Solutions for Bottom-Up Proteomics”</i></p>
<p><u>Lunch Seminars</u></p> <p>12:05 pm – 1:20 pm (HSLC 1335 and 1345, Virtual option available in Zoom)</p>	
<p>12:20 pm – 1:20 pm</p>	<p style="text-align: center;">ThermoFisher Scientific (HSLC 1335) Speakers TBD</p>
<p>12:20 pm – 1:20 pm</p>	<p style="text-align: center;">Agilent Technologies (HSLC 1345) Jonathan Sweedler, PhD University of Illinois Urbana Champaign <i>“Single-Cell Metabolomics via CE-NanoESI-MS”</i></p> <p style="text-align: center;">Anna Anders University of Michigan <i>“Development of Native Ion Mobility-Mass Spectrometry (IM-MS) and Collision-Induced Unfolding (CIU) for the Structural Characterization of Non-coding Ribonucleic Acids (ncRNAs)”</i></p> <p style="text-align: center;">Gary Patti, PhD Washington University at St. Louis <i>“Spatial Analysis of Metabolic Fluxes by Mass Spectrometry Imaging”</i></p>

Rising Star Session, Junior (Predoc- and Postdoc Trainees)

(Sponsored by UW Carbone Cancer Center)

Chairs: Judith Simcox, PhD and Tom Gao, PhD

1:30 pm – 3:10 pm (HSLC 1306, Virtual option Available in Zoom)

Each finalist will give a 10 min presentation plus 2 min Q&A.

1:30 pm – 1:42 pm	<p><i>Isabela James (Predoc)</i> University of Wisconsin - Madison <i>“Ceramide increase energy expenditure in brown adipose tissue”</i></p>
1:42 pm – 1:54 pm	<p><i>Cory Matsumoto (Predoc)</i> University of Illinois-Chicago <i>“Automated Container-less Sample Processing System for Single Cell Multi-omics”</i></p>
1:54 pm – 2:06 pm	<p><i>Yanqi Tan (Predoc)</i> University of Illinois Urbana – Champaign <i>“Proteomics Assessment of Plasma-Derived Extracellular Vesicles in Exercised Models by nanoLC-DDA-MS”</i></p>
2:06 pm – 2:18 pm	<p><i>Andrew Zhu (Predoc)</i> University of Wisconsin – Madison <i>“Deep Structural Characterization of Metabolites and Metabolic Regulation of Protein Post-Translational Modifications in Diseases”</i></p>
2:18 pm – 2:30 pm	<p><i>Zhan Gao, PhD (Postdoc)</i> University of Wisconsin – Madison <i>“Global Proteoform Analysis in Human Hypertrophic Cardiomyopathy through Top-Down Proteomics”</i></p>
2:30 – 2:42 pm	<p><i>Morgan Mann, PhD (Postdoc)</i> Stanford University <i>“High Resolution Liquid Chromatography – Mass Spectrometry (LC-MS) For Rapid, High-Throughput Clinical Testing of β2-Transferrin in Human Nasal Secretions”</i></p>
2:42 – 2:54 pm	<p><i>Pei Su, PhD (Postdoc)</i> Northwestern University <i>“AutoPiMS: spatially-resolved top-down mass spectrometry enables proteoform-level spatial biology of ovarian cancer”</i></p>
2:54 – 3:06 pm	<p><i>Lyndsay Young, PhD (Postdoc)</i> Medical University of South Carolina <i>“Multi-Omic Application of MALDI-MSI and MALDI-IHC for Biomolecular Profiling of Immune Cells in Tissues and Single Cells”</i></p>

3:10 pm – 3:30 pm	Break & Exhibits	HSLC Atrium
<p><u>Session III</u></p> <p>Chair: Zhicheng Jin, PhD and Xin Yi, PhD</p> <p>3:30 pm – 5:00 pm (HSLC 1306, Virtual option Available in Zoom)</p>		
<p>3:30 pm – 3:55 pm (20 min presentation, 5 min Q&A)</p> <p>3:55 pm – 4:20 pm (20 min presentation, 5 min Q&A)</p> <p>4:20 pm – 4:45 pm (20 min presentation, 5 min Q&A)</p>	<p>David Murray, MD, PhD Mayo Clinic <i>“Bringing Mass Spectrometry to the Care of Patients with Monoclonal Gammopathies”</i></p> <p>Ruben Luo, PhD Stanford University <i>“Clinical Diagnosis on Hemoglobin Variants and Monoclonal Immunoglobulins: Application of Top-Down Mass Spectrometry and Exploration of Single-Molecule Protein Sequencing”</i></p> <p>Si Wu, PhD University of Alabama <i>“Ultrasensitive top-down using spray-capillary CE-FAIMS-MS”</i></p>	
4:45 pm – 5:00 pm	Awards & Closing Remarks	

